

Magic carpet

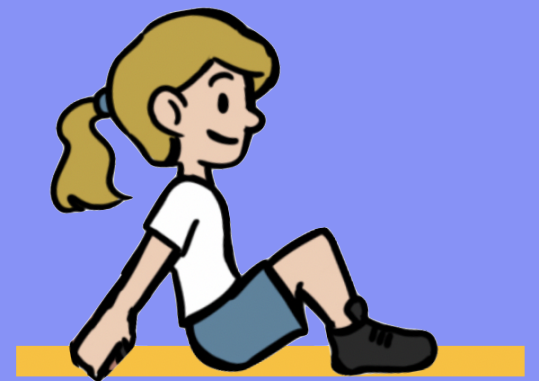


Get Set 4
Education

What you need: Ten socks, one towel per player, one or more players.

How to play:

- Mark a distance of 5m – 7m and place all of the socks at one end.
- Players begin sitting on their towel at the start line opposite the socks.
- They race to collect one sock at a time and transport it back to the start line. They must not come off their towel.
- Make the carpet move by bringing your heels to your bottom and then straightening your legs as you shuffle forwards.
- Playing by yourself? How quickly can you transport the socks?
- Playing with someone else?
Who can transport the most socks?



How else can you make the carpet move?